



V1506-2	on-off toggle valve 2way
V1506-3	on-off toggle valve 3way
V1507-2G	momentary toggle valve 2way

- All brass body and valve
- Tough, flexible toggle
- Available in Grey or Black
- Choose from 2 or 3 way



V1511G	needle flow control with knob
V1513G	knob for RV1511

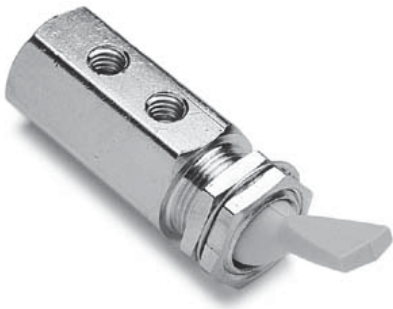


90010079	needle flow control with knob
90010078	needle flow control without knob



V1514	mini flow restrictor
--------------	----------------------

- Variable restriction of air or fluids
- Pass-thru accepts 1/8" or 1/4" hookup tubing



V1515G | routing toggle valve

- 2-way valve routes air or water



V1516 | air actuated on-off valve
2way n.c.

V1517 | air actuated on-off valve
2way n.o.

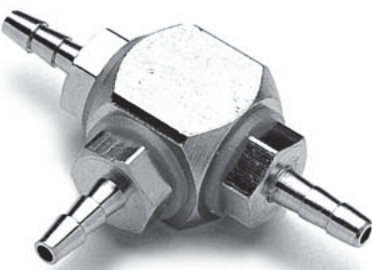
V1518 | air actuated on-off valve
3way n.c.

- Activated by an air signal
- 2 or 3-way
- Normally open or closed



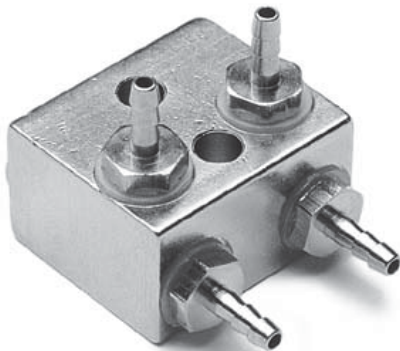
V1519 | check valve

- Solid brass
- 2.5 PSI cracking pressure
- Air or water use



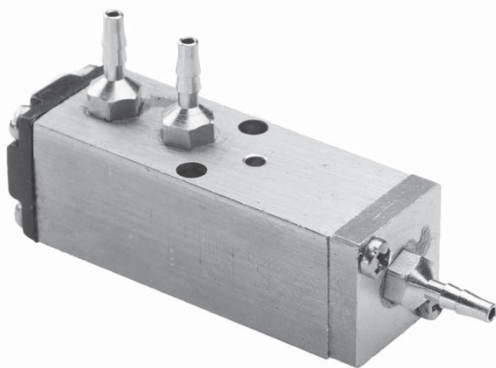
V1520 | shuttle valve

- Nickel plated brass
- Air or water use
- High pressure inlet blocks lower pressure inlet
- 1/16" barbed fittings



V1521 | flow adjustment manifold

- 10-32 ports, 1/8" or 1/4" fittings
- Manages air and/or water flow
- Nickel plated brass
- Perfect for syringes



90050010 | water non-retracting valve



V1523 | visual indicator

- Air activated color pressure indicator
- Red or green indicator options
- Attractive grey panel mount
- 10-32 port



V1526 | in-line filter

- 35 micron filter disc
- 1/8" FPT ports



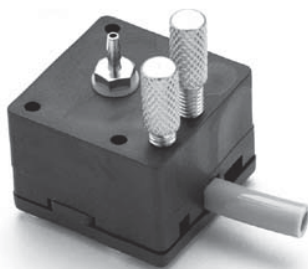
V1527 | mini in-line filter disc

- 35 micron filter disc
- Use for V1526 and other mini filters
- Measures 7/8" x 1/16"



V1528 | pinch water valve

- No metal to water contact
- Simple to maintain
- Replaces OEM unit water valves
- 1/16" barbed signal fitting



V1529 | flex valve

- Drive-air Pinch-style valve
- Direct replacement for Ampco® units
- Accepts 1 x 1/4" & 3 x 1/8" tubes



V1531 | air activated routing valve

- Air-signal actuated-no toggle
- All brass body and valve
- 2-Way valve for air or water service



V1570 | water valve

- Mini water valve
- Positive shut-off, 2-way
- Non-retracting
- Plated brass

**V1805** | water retraction relay

- Air activated water retraction
- 10-32 ports

**V1530** | filter for air or water

- Replaceable filter element
- 1/8" female/male ports

**V1601** | mini auto shut-off/filter assembly

- Complete Shut-off/ filter pack for air or water service
- Includes filter with replaceable element
- 1/8" FPT outlet
- Connects directly to angle stop

**V1602** | master Auto Shut-off Valve

- Auto shut-off for air or water service
- Solid brass construction
- 10-32 inlet and outlet